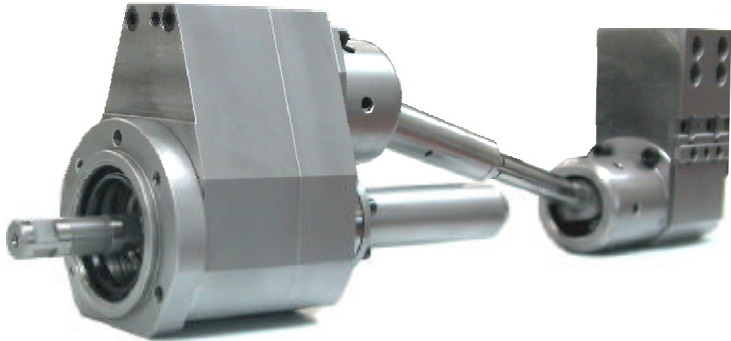


NEW

**PHASE CHANGER FOR
ROTATING ATTACHMENT**

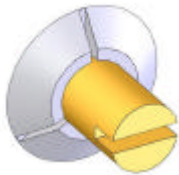
Optional used to change the angle of phase (with the main spindle) of rotating attachment on multispindle automatics.

This system allows to have new possibilities to make some parts.



EXAMPLES

STANDARD WORK



APPLICATION WITH FRONT MILLING ATTACHMENT



APPLICATION WITH UNIT FOR ECCENTRIC DRILLING



APPLICATION WITH POLYGONS MILLING ATTACHMENT

