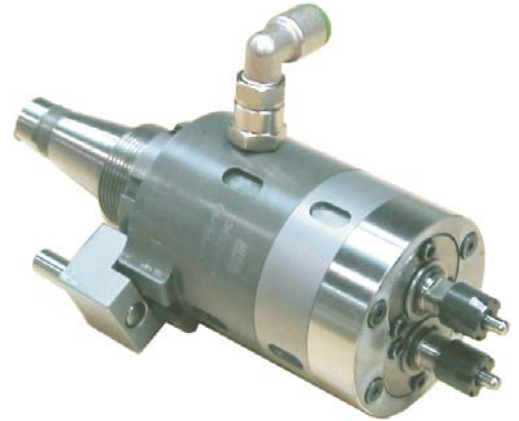


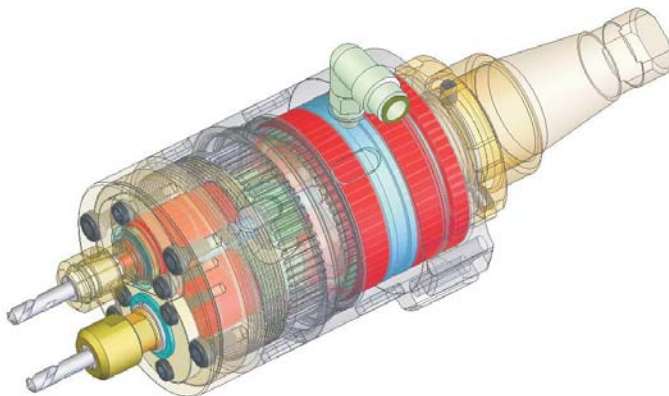
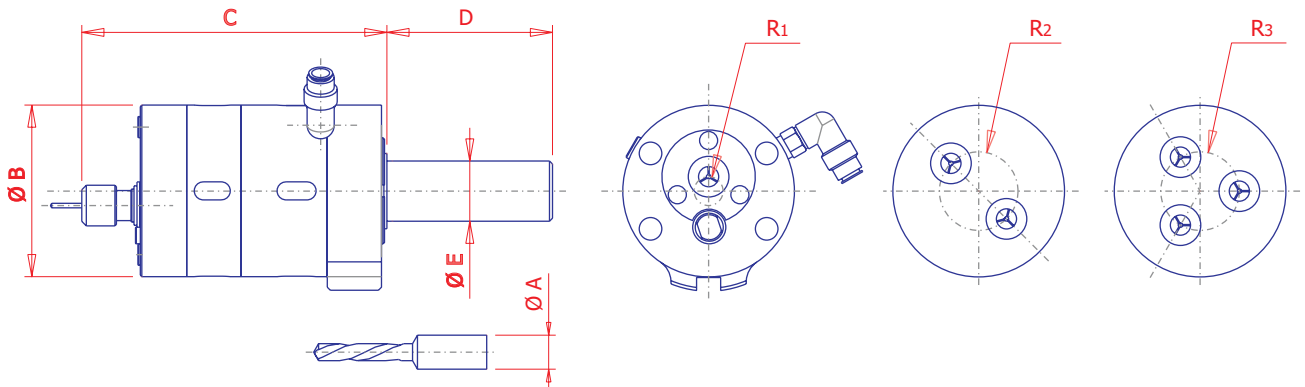
## ROTATING UNIT FOR ECCENTRIC DRILLING.

Attachment for multispindle automatics used to execute single or multiple frontal eccentric drillings on the pieces which are working on the main spindle.



Size	Ø A max	Ø B	C	D	Ø E *	R max	R <sub>1</sub> min	R <sub>2</sub> min	R <sub>3</sub> min	Speed max	Driver ratio Tools/spindle
Gr.1	5	59	100	40	20	13.5	0	8.5	9.85	3000 giri/min	3.41:1

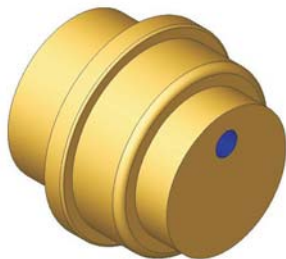
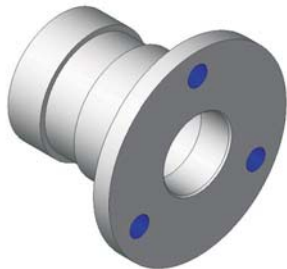
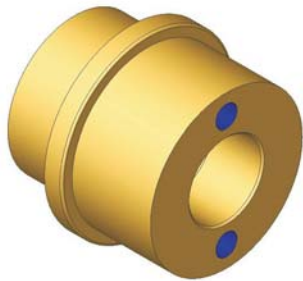
\* Availability of different kinds of junctions



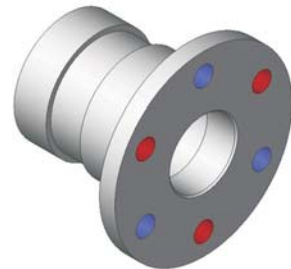
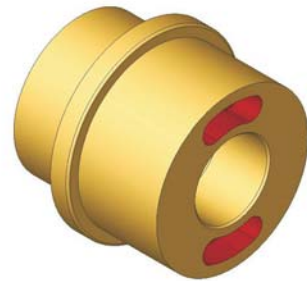
## **PHASE CHANGER DEVICE AND FRONTAL ROTATING UNIT FOR ECCENTRIC DRILLING**

The coupling of a frontal rotating unit for eccentric drilling with a phase changer device allows to execute on rotating pieces which are working on the main spindle, beside standard drillings, a further range of "supplementary" drillings differently oriented with respect to previous ones.

It's furthermore possible to perform more than one drilling with an eccentric wheelbase value lower than the one got by the unit.



**STANDARD MACHININGS**



**"SUPPLEMENTARY" MACHININGS  
WITH PHASE CHANGER DEVICE**